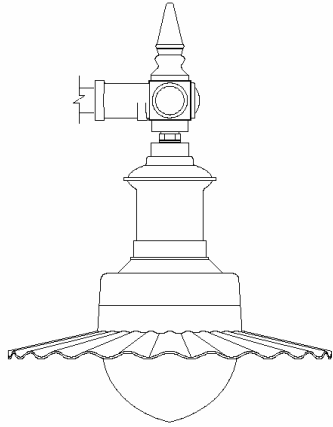


INSTALLATION INSTRUCTIONS

Securing of Roadway Luminaire to Roadway Fitter (Plumbizer).

Product Series WLC Arm & WL Fixture



IMPORTANT SAFETY INSTRUCTIONS

(For your protection and to avoid INJURY read carefully.)

- Trained and certified installers should perform installation.
- Use of proper lifting equipment and safety harness is a must.
- Safety measures such as use of safety glasses and steel toe shoes should be followed.
- DO NOT install in adverse weather conditions such as rain or heavy winds.

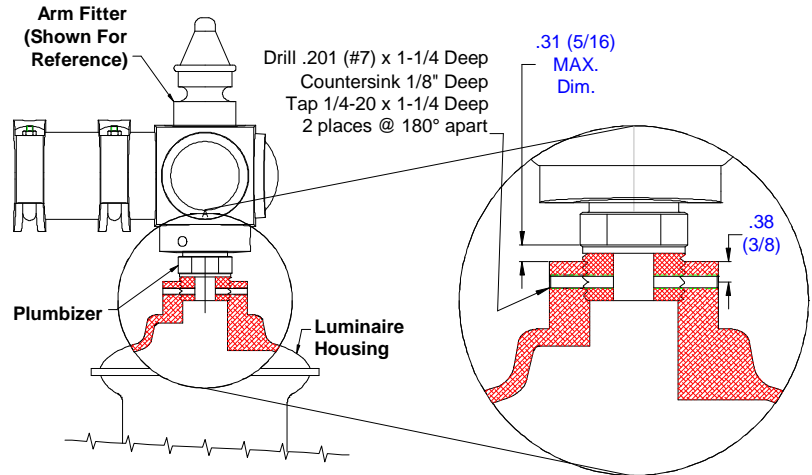
WARNING: NEVER attempt any maintenance of the Luminaire or disconnect any component while power supply is engaged. Make sure power supply is off before servicing Luminaire.

Prior to Installation

Read carefully before installing the screws. If you do not understand these instructions, please contact your local ASL agent before installing.

Installation

1. Disconnect power from the luminaire.
2. Remove existing setscrew from fixture and set aside. This will be reinstalled below.
3. Tighten Plumbizer down into luminaire to dimension shown.
4. Plumbizer must be a MAXIMUM of 0.31 (5/16) inch from the top of the luminaire to the bottom of the wrench flat.



5. Reinstall setscrew from Step #2.
6. Use a 0.201 (#7) drill bit and drill into the housing and plumbizer 90 degrees from the set -screw (2 holes) to a depth of 1 1/8 inches. Countersink 1/8\"
7. Tap the 2 holes that were just drilled with a 1/4-20 flat bottom tap.
8. Insert 2 screws (1/4-20 x 1 1/4\") into the newly drilled and tapped holes. Make sure screws are tight by nut driver or similar.
9. Re-connect power.

1/4-20 x 1-1/4\" Button Head Socket Cap Stainless Steel

