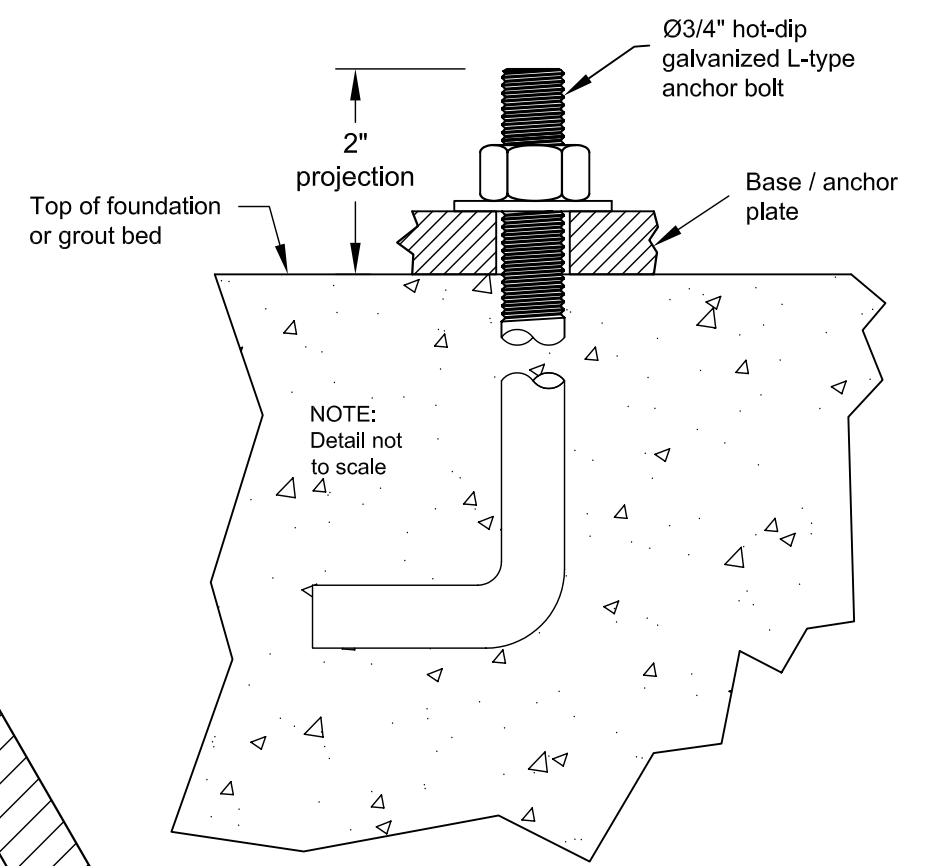
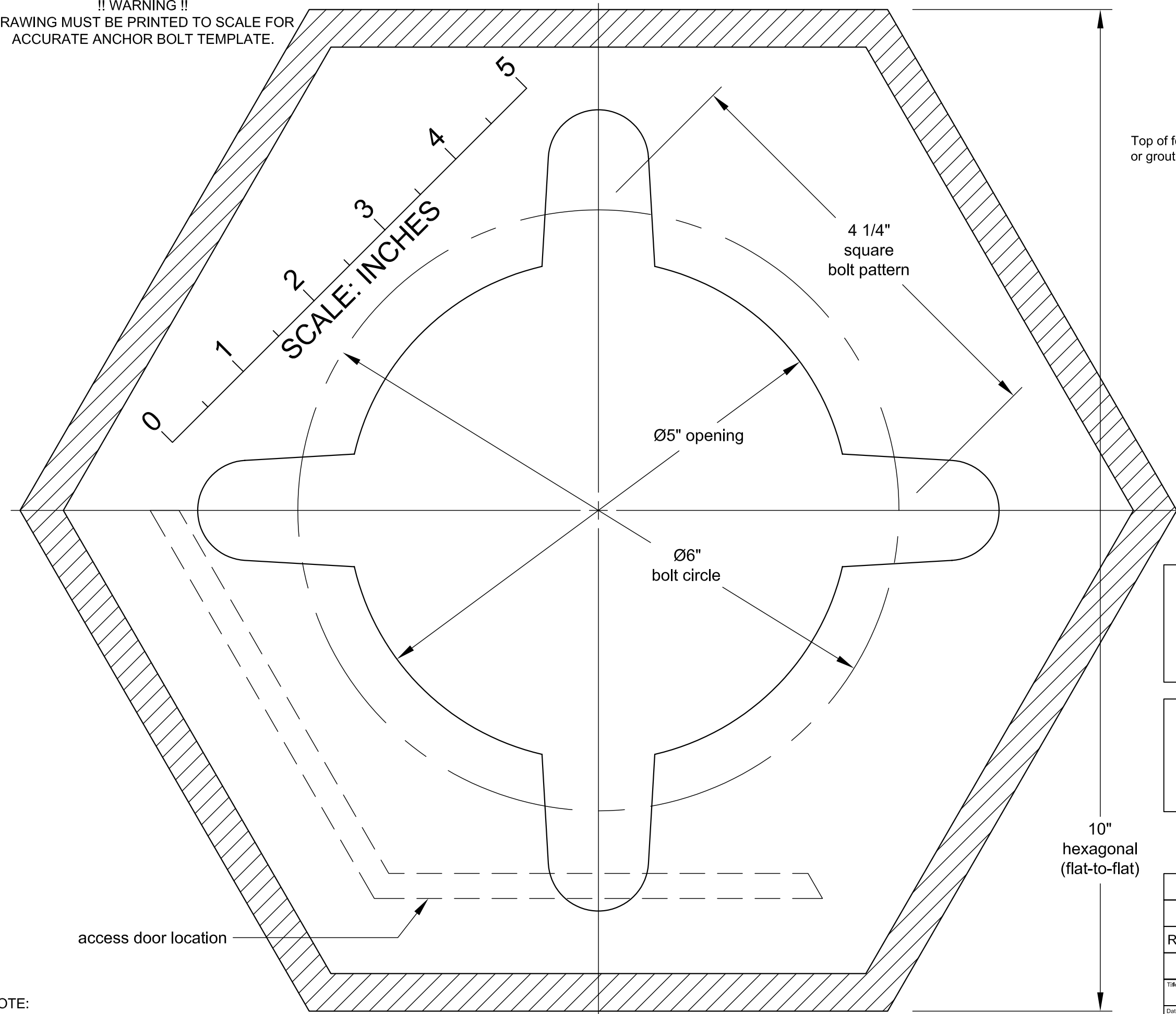


**!! WARNING !!**  
DRAWING MUST BE PRINTED TO SCALE FOR  
ACCURATE ANCHOR BOLT TEMPLATE.



**Installation Notes:**  
 1) Foundation must be as large as anchor plate.  
 2) Foundation surface must be flat and level.  
 3) A 1/4" thick grout bed may be used, as required.  
 4) Contractor must ensure foundation is sufficient for intended installation.

Base footprint: 10" hexagonal  
 Center opening: 5" diameter  
 Bolt circle: 6" diameter  
 OR  
 Bolt pattern: 4 1/4" square

NOTE:  
VERIFY THAT THE SCALE IS FULL SIZE PRIOR TO USE.

1	12/16/03	chg to Ø6" bolt circle	SA	RLD									
-	7-1-02	New (ref: AB-236)	SH	SH									
Rev.#	Date	Rev. Description	Drwg	Appvd									
<b>ANTIQUE Street Lamps</b>													
Title: <b>FM10ABS-BC(.75X6.0)</b>													
Date:	7-1-02	Scale:	FULL	Dwg Size:	B	Page #:	1 of 1	Dwg Type:	AB	Dwg #:	AB-624	Rev:	1

2011-B W. Rundberg Lane : (512) 977-8444  
 Austin, Texas 78758-5946 : Fax (512) 977-9622