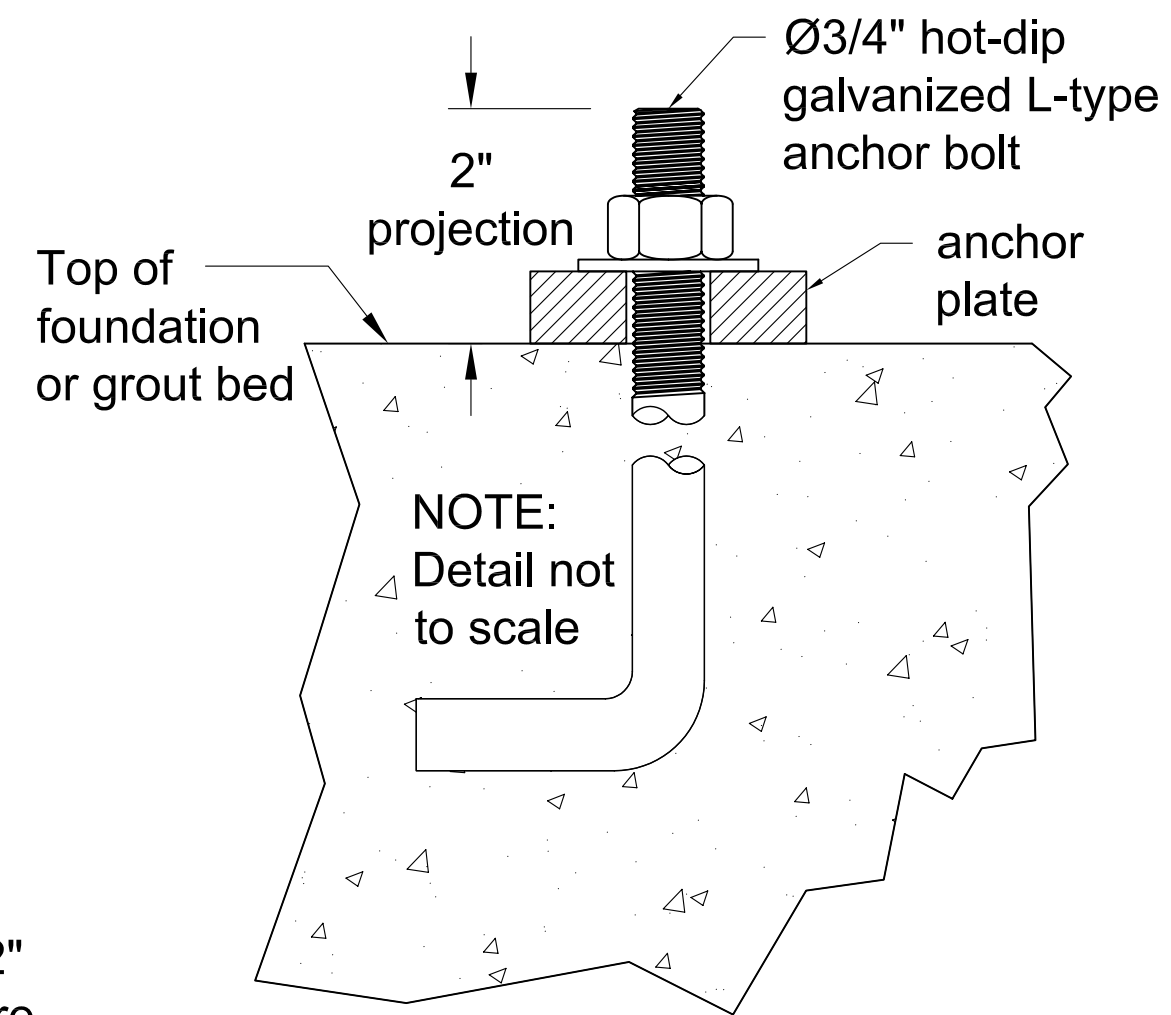
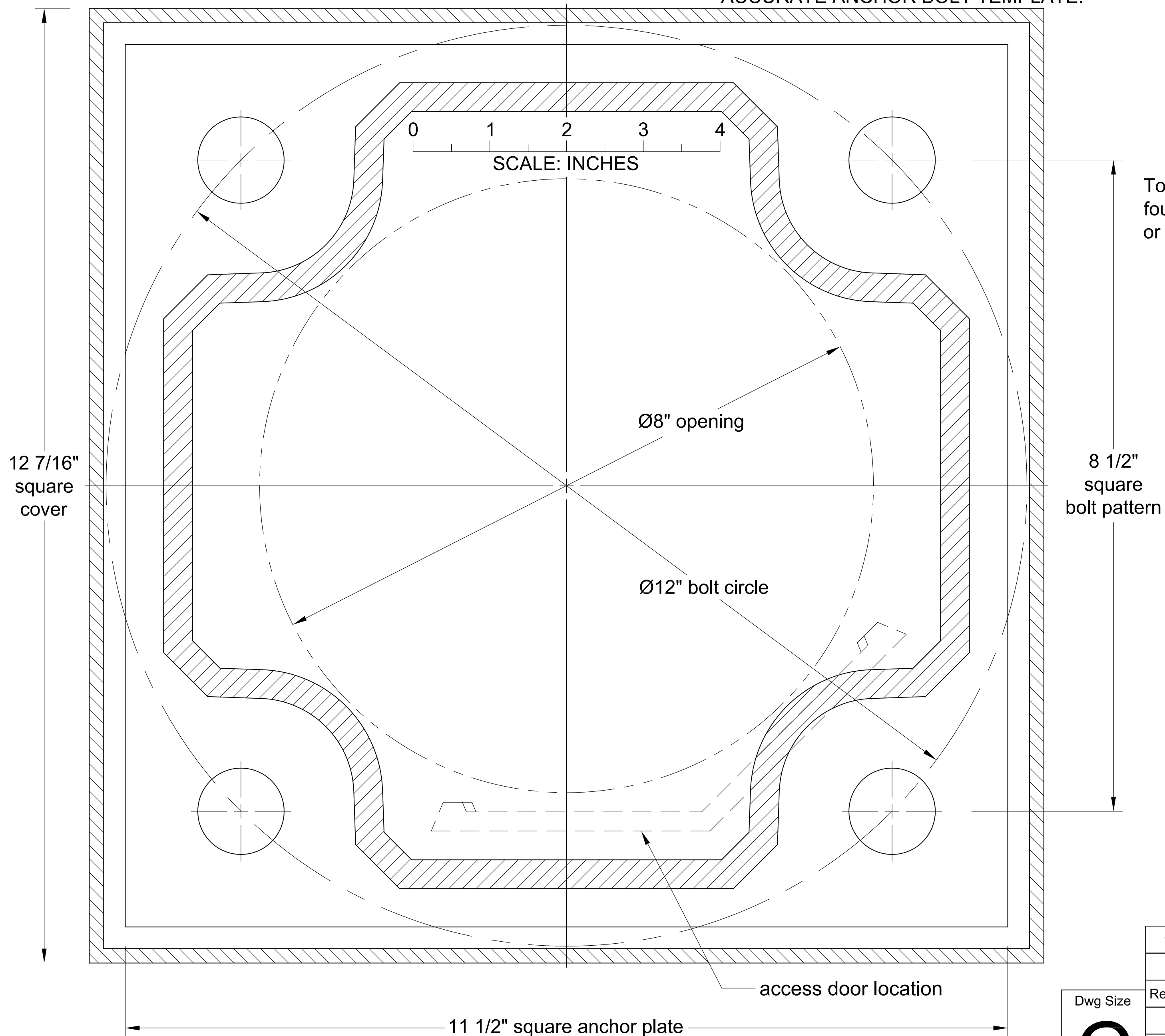


NOTE:
VERIFY THAT THE SCALE IS FULL SIZE PRIOR TO USE.

!! WARNING !!
DRAWING MUST BE PRINTED TO SCALE FOR
ACCURATE ANCHOR BOLT TEMPLATE.



Installation Notes:

- 1) Foundation must be as large as anchor plate.
- 2) Foundation surface must be flat and level.
- 3) A 1/4" thick grout bed may be used, as required.
- 4) Level surface of support anchor plate cover, (see catalog for size), as required.
- 5) Contractor must ensure foundation is sufficient for intended installation.

Base footprint: 11 1/2" sq. (12 7/16" w/ cover)
Center opening: 8" diameter
Bolt circle: 12" diameter
OR
Bolt pattern: 8 1/2" square

1	3-5-03	Revise cover size	SH	SH
-	11-4-02	New (ref: AB-598)	SH	SH
Rev.#	Date	Rev. Description	Drwg	Appvd
ANTIQUE Street Lamps				
Title:		BL12 AB3/12		
Date:	Scale:	Dwg Size:	Page #:	Dwg Type:
3-5-03	FULL	C	1 of 1	AB
Dwg #:		Rev:		
AB-631		1		

Dwg Size
C

2011-B W, Rundberg Lane : (512) 977-8444
Austin, Texas 78758-5946 : Fax (512) 977-9622